

Clip: 1 of 1

Colours celebrate spirit of women

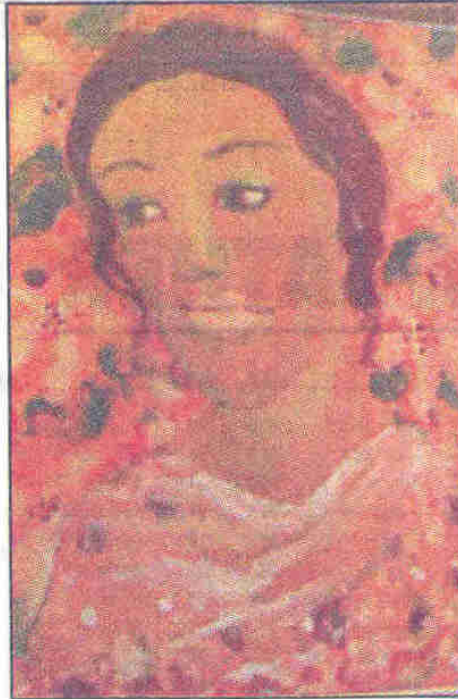
SHONE S.B.

At first blush, an exhibition celebrating the liberation of women by showcasing their award-winning works may sound like one more addition to the cause of gender equality and freedom of expression for women. But the ongoing "Pink Is New Blue" promises to create more than just that.

Held at the Suruchi Art Gallery Noida, this month-long exhibition puts up distinguished works of 20 women artists on display. And that itself is the best part about the exhibition. Bringing so many artists under one roof to celebrate the bold, intrepid spirit of womankind drives home the point very well.

The title might seem a bit ambiguous, since making pink the new blue seems to admit the grandness of blue in the first place. But this is exactly what the exhibition aims to portray. The emphasis here is on depicting feminists as those, who are acquainted with themselves, and not as someone repelled by the opposite sex.

The attempt to step outside the clichéd bubbles and show forth a recognition of the inner self through various works lies at the heart of this exhibition.



Paintings depicting the bold and intrepid spirit of women

Sunita Gupta of Suruchi Gallery said, "Women have played an important role in the evolution of various forms of art. 'Pink is new blue' is our way of saluting the women artists and their contribution to Indian art."

Even within a singular theme, the

various creations seemed to glide over and overlap without losing their individuality. From Anupam Sud's abstract masterpiece *Dilemma* and Kristine Michael's luscious ceramic installation *Cradle Song to Anjana Mehra's* untitled bird-eyed landscape, the inner reflections of each artist has come out in a provocative light.

Anupam Sud's creation *Birth of Art* carries a simple title, but the implications of this black and white abstract rendition are huge. In the artist's own words, "I have tried to depict the overwhelming pain that comes with the birth of anything. That materialism is one of the biggest obstacle in acknowledging this pain is very evident through the picture."

And providing more clues, she has juxtaposed DNA strands alongside fertilised eggs to demonstrate the tug-of-war between the masked man and his real self.

It is a clash of natural phenomenon and materialistic ambition. The most noticeable aspect about her works is the tactile feel, having been etched on paper from a stone print.

By bringing such multi-faceted artists under one roof, this exhibition has also been successful in celebrating the triumph of collective consciousness over individual pride.